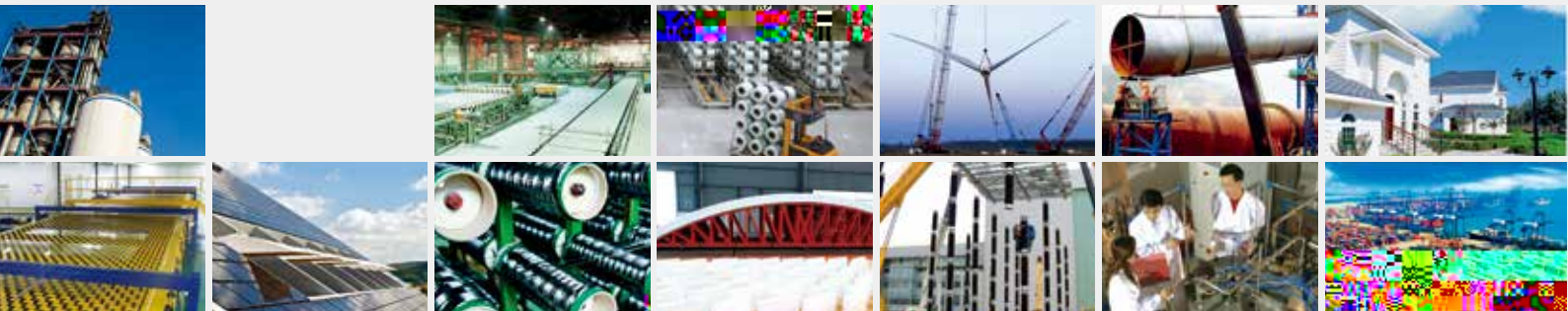
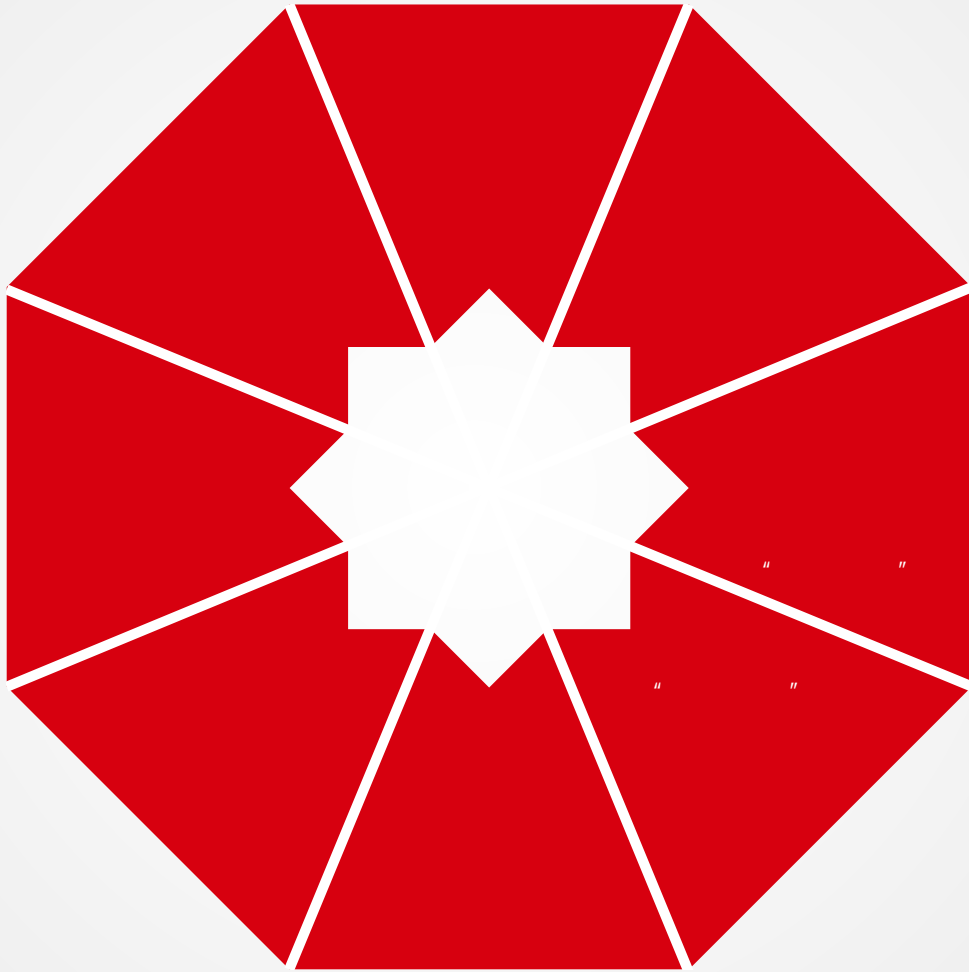


# 高世代TFT-LCD玻璃基板示范线

獻



**中国建材集团有限公司**  
China National Building Material Group Co.,Ltd.







# Contents 目录

2019 8 143



1

4 8.5 FFF- >CD

5

6 2019

8

9

10 G fcdFWJZ CEA

11 2019

12

13

14

14

37 2 - / ...



19

42

11

26

44

)"

35

48

70

70

8.5 FFF >CD

39

70





9 18

8.5 TFT-LC...1



9 18



\$" #+

“ ”

“ ”



2019

8

11600

230

6

30

5

1

1

2

2019

12

2019

+ +





20

500

KPI

2018

2018

10

2

5

150



5

2



“ ”



焮



GFSWUZ

57A

“ ”



UltraTech CEO

+

UltraTech

1

Birla

+

+

+

+

UltraTech  
Agrawal

Vivek

# \$" #+

2019 1121.6  
17.8% 1266 37.4% 57.7 51.3%

HK3323 2019 106  
153%

2019 1121.6  
17.8% 1266 37.4% 57.7  
51.3% 51.3%

1.70 5.9% 4,923 182.7 15.6%  
17.1% 2,389 68.4% 67.7% 4.5  
9.04 4.4% 114 122.3% 25.7  
4.3% 4483 121.4%  
1730 12.8%

+ 2019 PC32.5R

2019  
+

340 / 9.2%  
58.8 57.9%  
+ 9.04  
4.4% 3.2%  
114  
4.3% 4.0% +  
4483  
121.4%  
2  
50 200  
+





— —

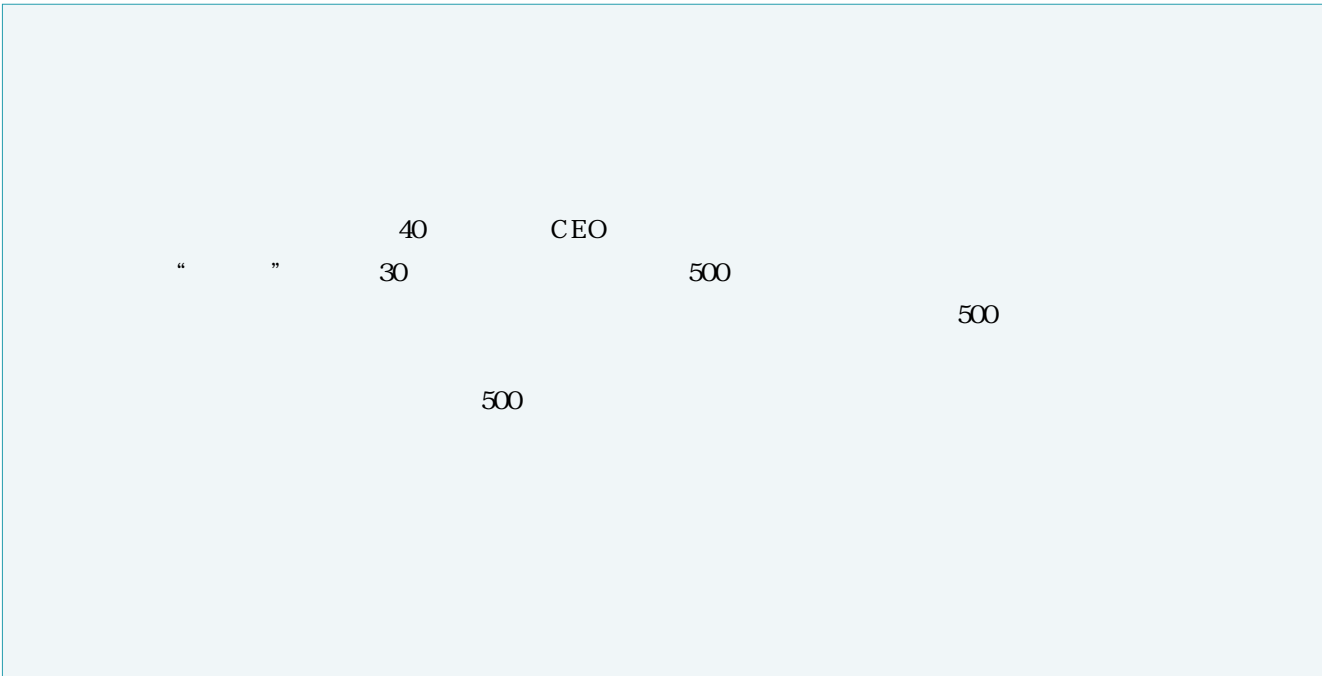
4



“ ”

“ ”

“ ”



BIMBA

500



+ + +  
+ Y . 0





/



MBA

2018

40

? BA

40

? BA

? BA

500

30





//

//

”

2015 9

2016



#Z= B;

20

11

1- 2

2017

2018

2018

1.5

1488

\$ž

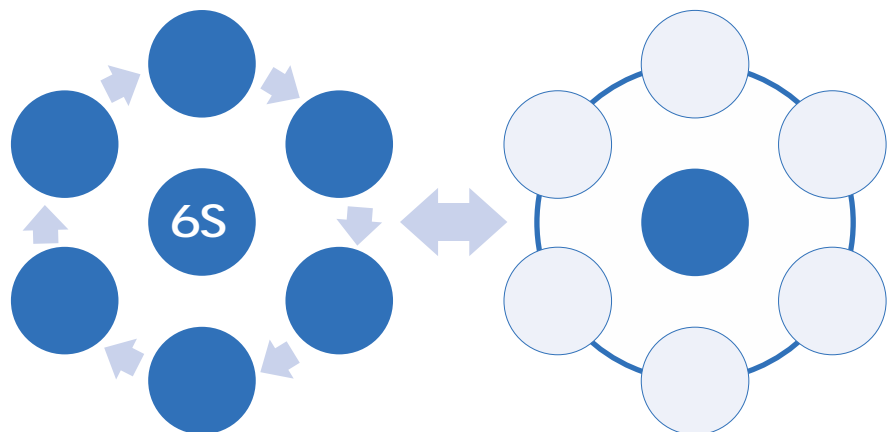
7.29      2.89      4.05  
2.51      5000  
50] I Z      105=Y  
107=Y      2500      55] I Z

%ž (E

6E

5

6



5





6

\$ž

2013

2.8

100%

0.5 /

2018

700 /

2019

6E

2018 6

28



“ ”

“ ”

“ ”



“ ”

“ ”

; EA 9001 ; EA 14000  
A : EA E18001

90%

30

3

1000

=CC : @G

AdVS]S E? A GE

2017

6

E>E? AF;C

28

2017

E @D

250

73 45



2005

EBC

3 5

973 863

E>E? AF;C

3

30

1000

2017 11

90%

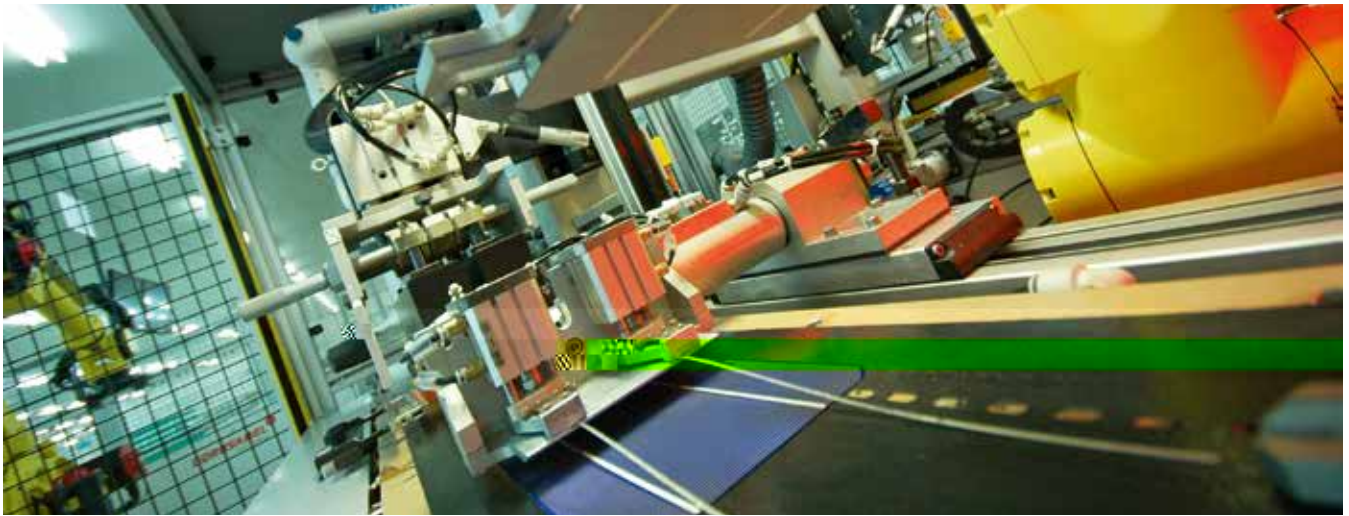
1200

=CC  
650

900







#ž

;EA 9001  
;EA 14000      A : EAE18001

GA

;CE

=B;

10%  
:EA 9000  
\$ž  
5%  
F;D;C  
%ž  
F;D;C



90%  
95%  
+E C D + C F F  
1.7 18.2%  
80% 100? I  
E B F G 1 300? I  
1.5 G I  
1250 1500 5.0  
2000  
/ 20 30%

CE







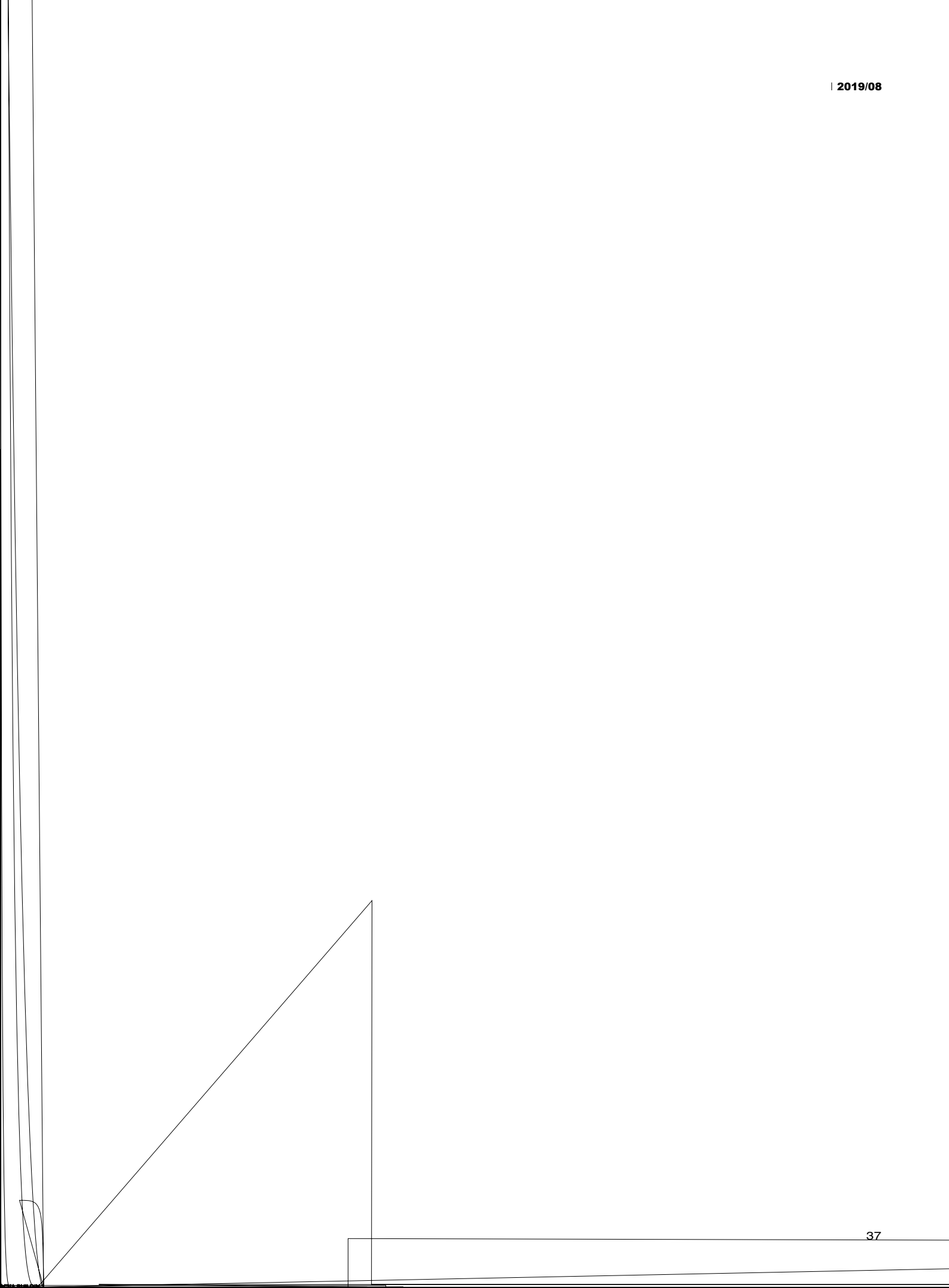






2019 5



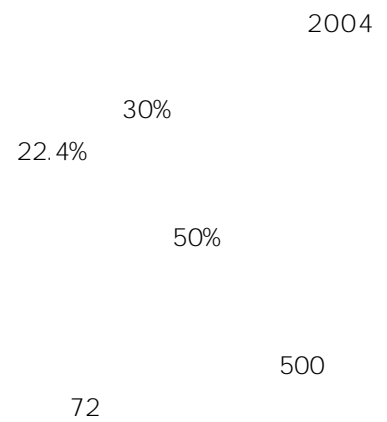
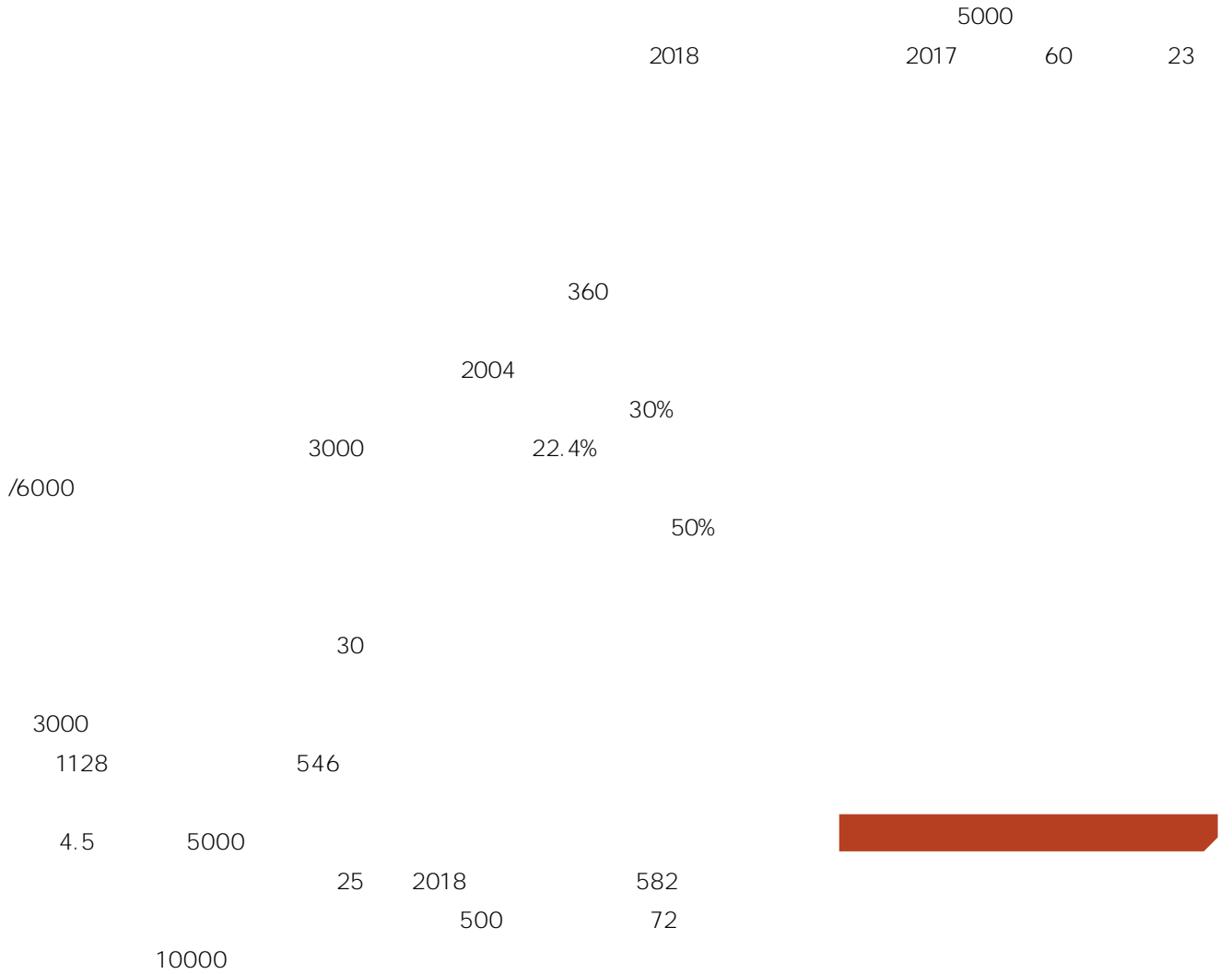


CC













06

6

07

\$" #+  
#" "

#" "

2019

100

2019

100

2019

100

08

2019

09

\$" #+

2019

5.0

10

13

16

520

80

30

11

\*Z F8FZ>56

8.5 FFF- >CD

ECBC

EBC

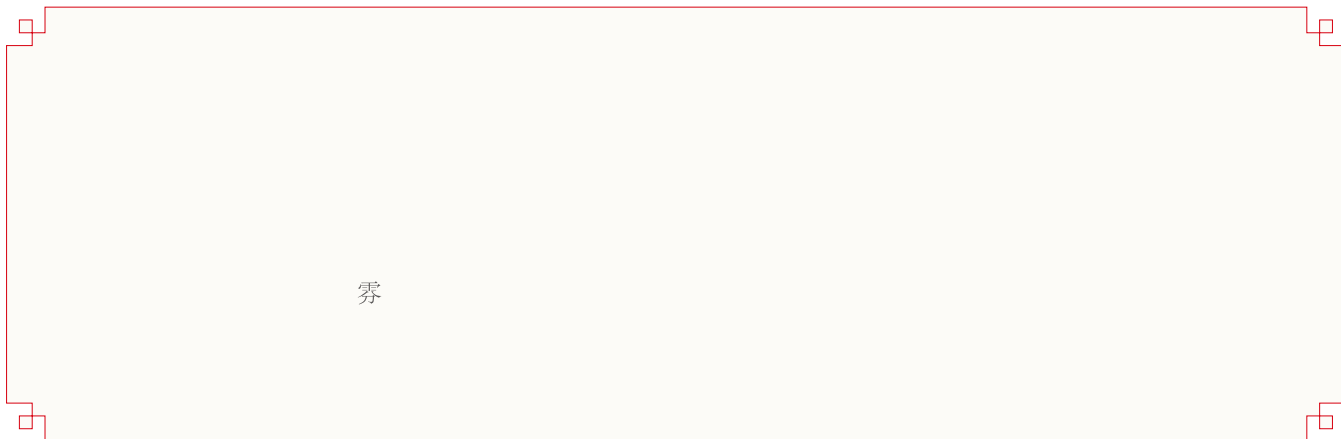
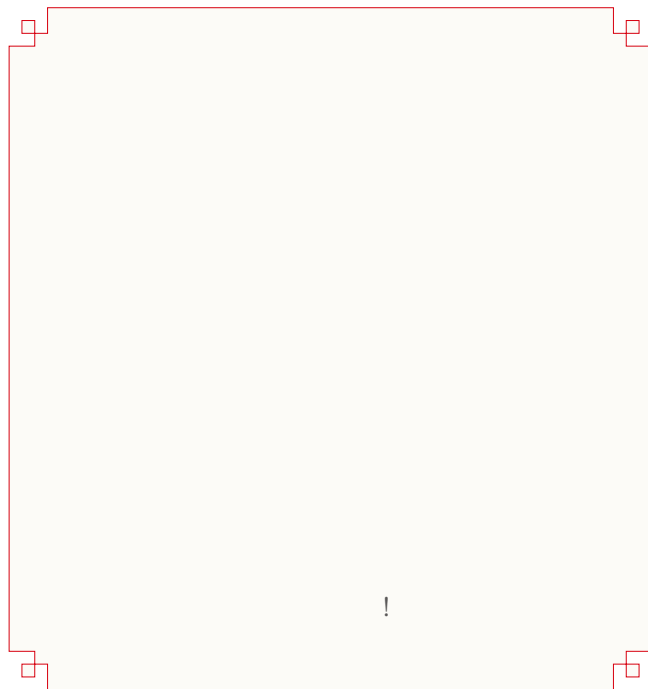
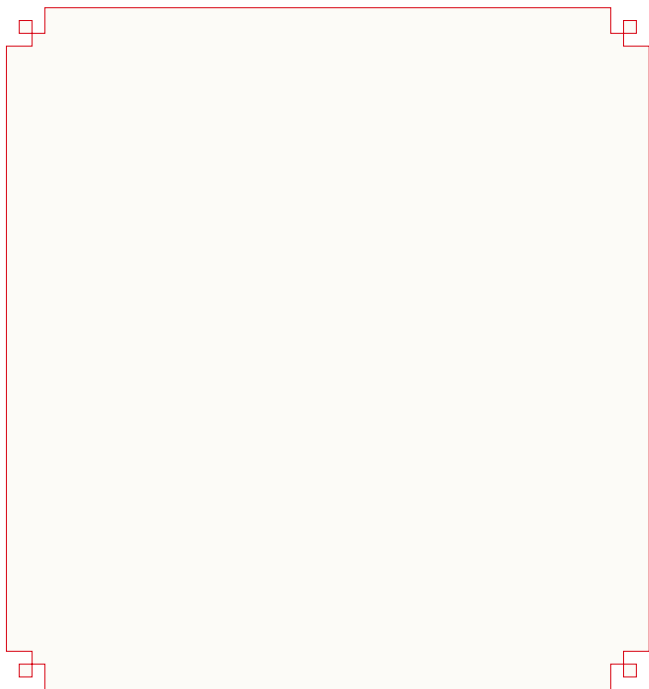
FFF- >CD

04

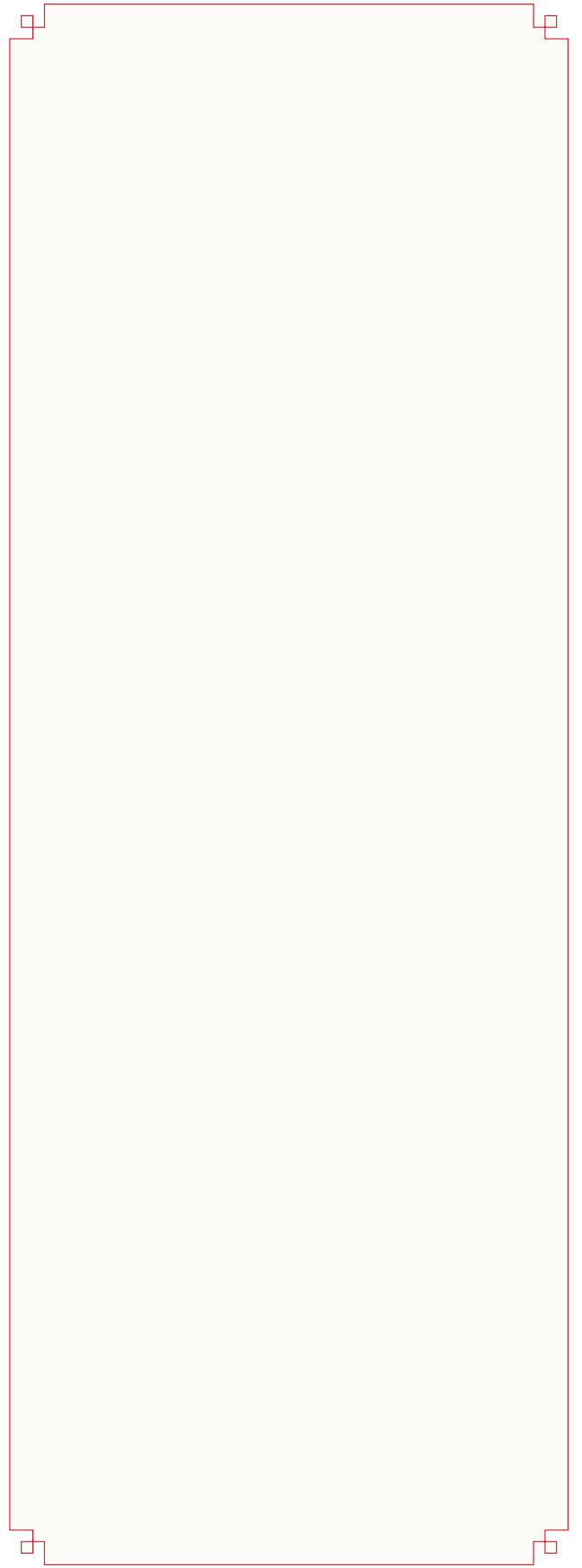
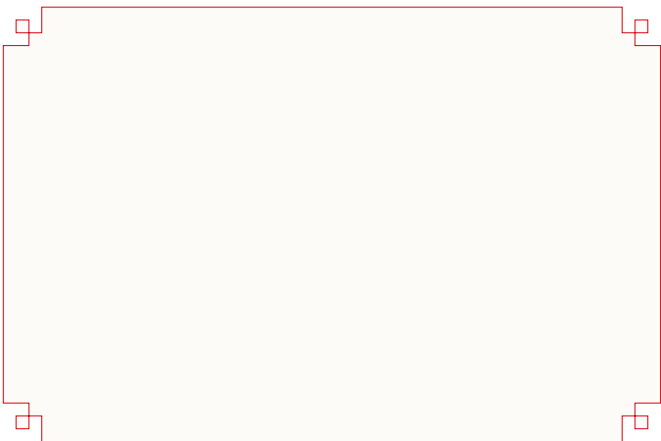
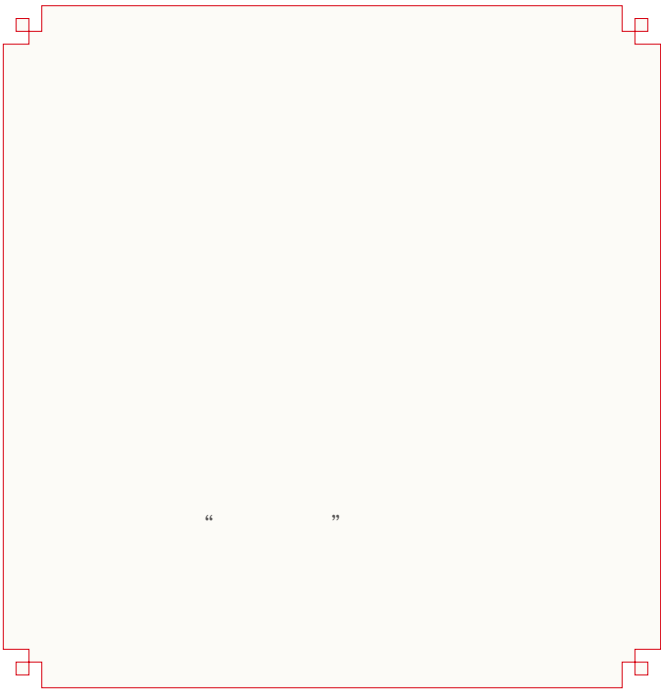
05

1949-2019

热烈庆祝  
中华人民共和国成立 70周年

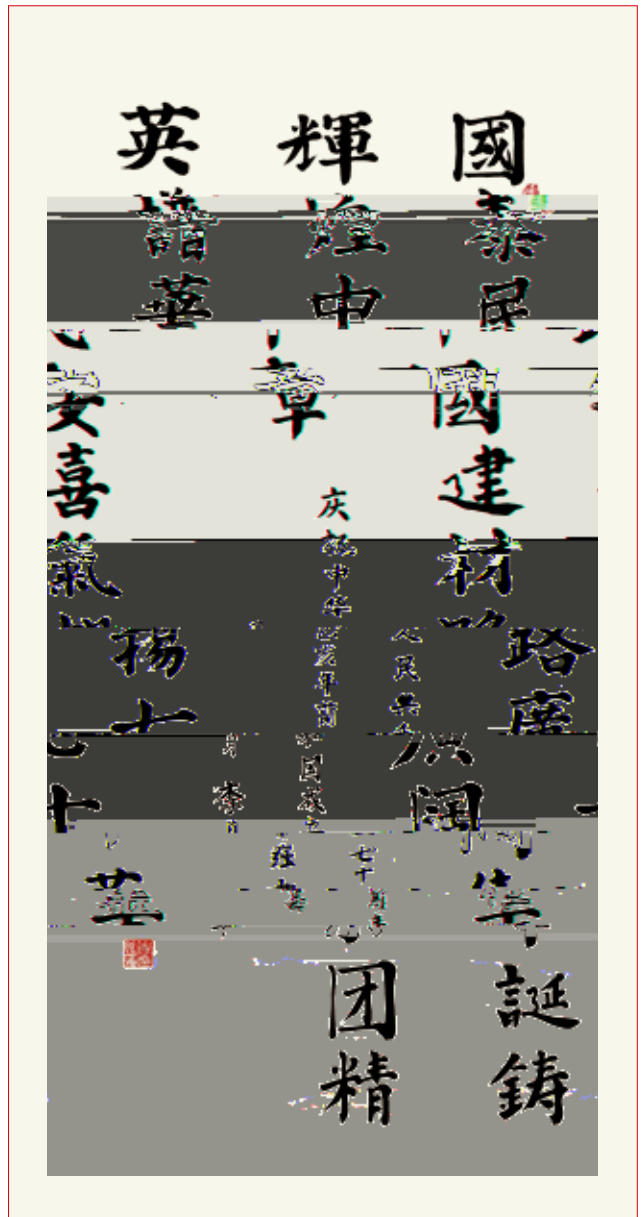
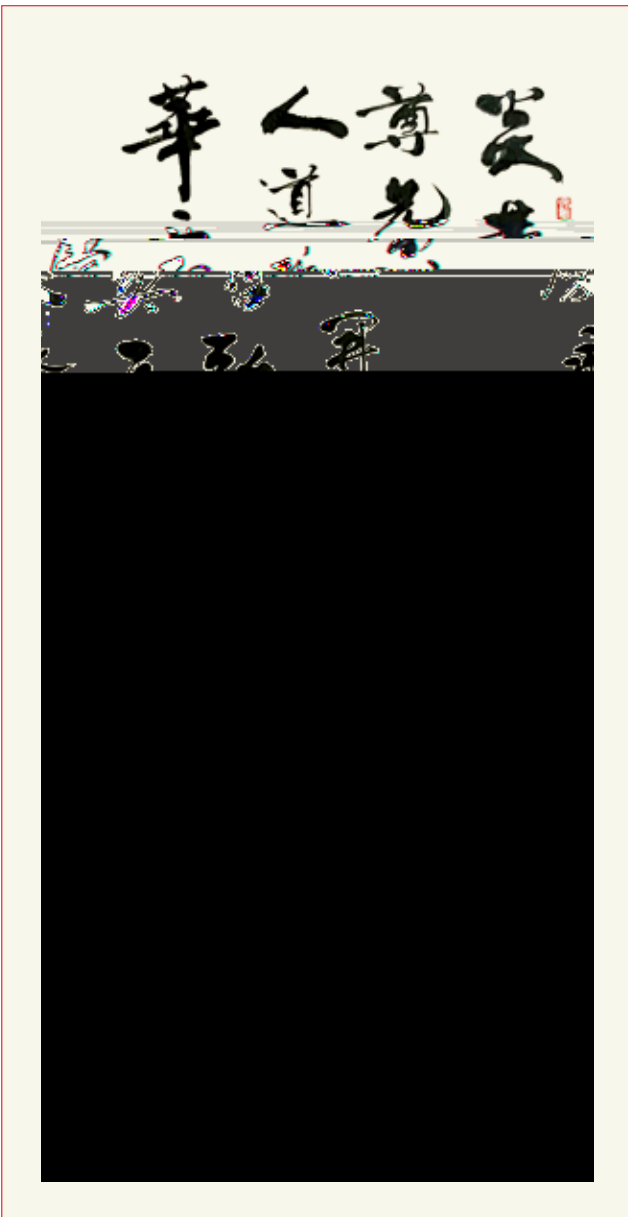


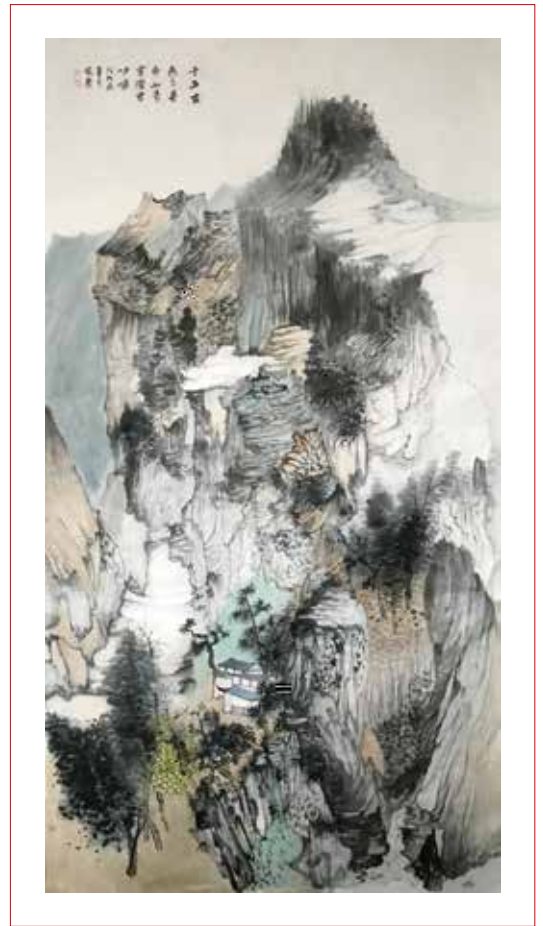
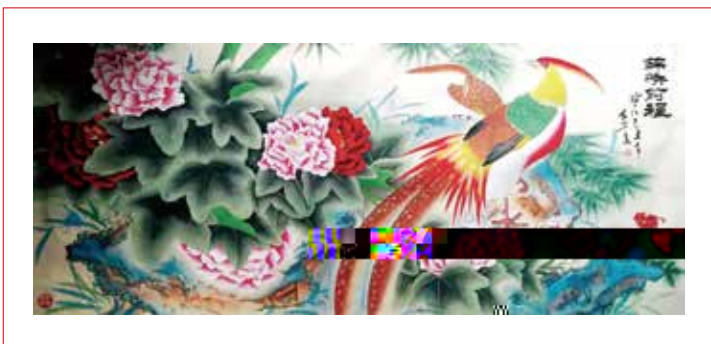
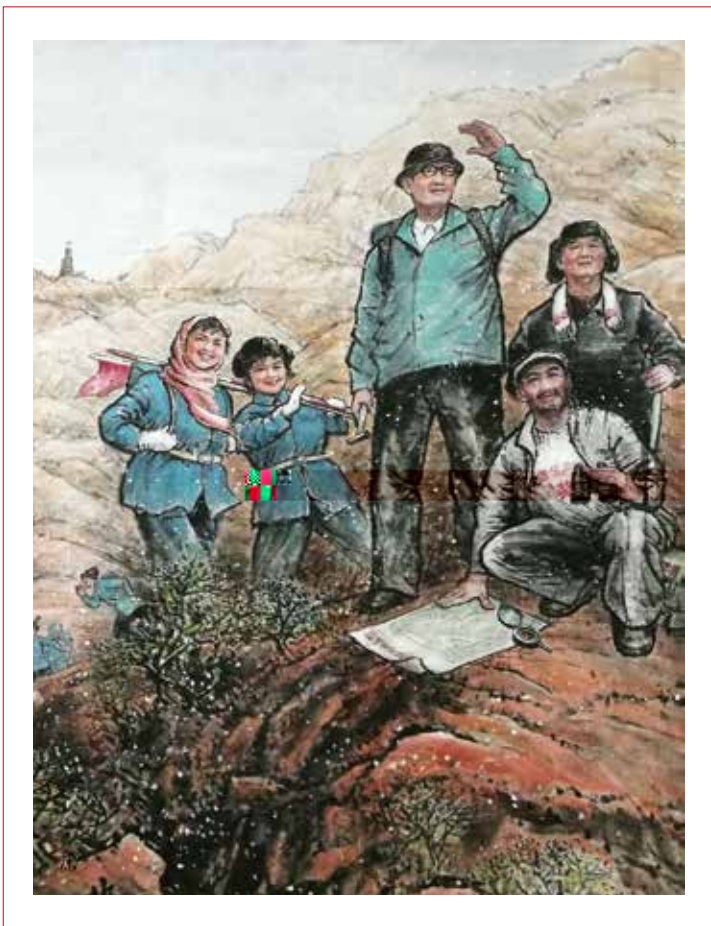
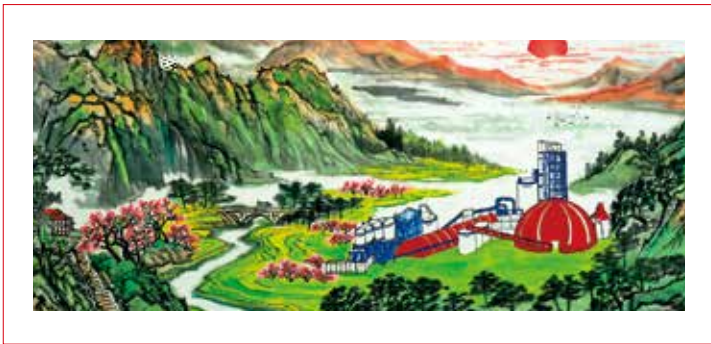
券





/









技术创新 服务建设  
 创新 绿色 和谐 责任  
 敢为人先 追求卓越  
 央企担当 联合奋进  
 同心聚力 共筑梦想  
 中国建材  
 八六工程  
 六通并举  
 产学研创  
 央企担当 联合奋进  
 同心聚力 共筑梦想  
 中国建材

70

010- 68138199







中国建材集团  
热烈庆祝  
中华人民共和国成立

70周年





